



Volkswagen AG, a member of the Volkswagen Group

Application for Emissions Certification Part 1

2015 Model Year

Durability Group: FVGADPDNNVAL
Evap. Families: N/A - Diesel

Test Group: FVGAV02.0VAL

EPA Certificate Number: FVGAV02.0VAL -xxx

Durability Group Description: Four stroke, diesel cycle, diesel fueled, direct fuel injection, compression ignition, turbocharger, charge air cooler, EGR, EGR cooler heated oxygen sensor, NOx-sensor
Oxidation catalyst: code: DF635
Diesel particulate filter (DPF) code: SF630
SCR catalyst: code: DF500B

Test group Description: 2.0 Liter I4 TDI Diesel (SCR) – LDV

Applicable Standards: 50-State: Federal: Tier 2 (Bin 5 150K UL)
CA: LEV III ULEV125

Carlines Covered: Audi A3
Volkswagen Passat, Golf, Jetta,
Beetle, Beetle Convertible

Vehicles Tested:

VID	Config.	Test Type / #		Test Type / #	
VW361 50070 /15	0	FTP /	FVGA10031167	HFET /	FVGA10031168
VW361 50070 /15	0	US06 /	FVGA10031169	SC03 /	FVGA10031170
VW361 50070 /15	0	Cold CO /	FVGA10031171		

Issue Date: 05-28-2014

Revised 06-19-2014

For Questions, Contact:

Bill Rodgers, (248) 754-4219
Michael Giles, (248) 754-4229
Greg Allen, (248) 754-4209

Table of Contents Part 1

Section 01 -	Correspondence and Communications	- refer to Common Sections
Section 02 -	Durability Group Description	- refer to Common Sections
Section 03 -	Evaporative/Refueling Family Description	- refer to Common Sections
Section 04 -	Durability Procedure Description	- refer to Common Sections
Section 05 -	Test Group Description	
Section 06 -	Test Vehicle Description	
Section 07 -	Test Results	
Section 08 -	Emission Testing Waiver Statements	
Section 09 -	OBD System Description	
Section 10 -	Description of Alternate-fueled Vehicles	Not Applicable
Section 11 -	AECD Description	
Section 12 -	Description of vehicles covered by certificate and test parameters	
Section 13 -	Projected Sales	
Section 14 -	Request for Certificate	
Section 15 -	Other Information	
Section 16 -	Confidential Information	
Section 17 -	California ARB Information	
Section 18 -	Fuel Fired Heater Description	

Table of Contents Part 2

Section 21 -	Vehicle Emission Control Information Label, Vacuum-Hose Routing Label Production Engines Parameters –Parts List-	see test group sections
Section 22 -	Calibration Information	see test group sections
Section 23 -	Vehicle Description	see test group sections
Section 24 -	Final US Sales	please refer to sec. 16.24
Section 25 -	Service Manuals, Service Bulletins	information provided directly at the time of distribution to the dealers.
	Owners Manuals and Warranty Booklets	provided under separate cover.

Section 5	Pg. 1	Test Group Description	Engine Code	R.CH- No.:	Revision Date:
Part 1	Test Group:	FVGAV02.0VAL	All		

5.1 Test Group Description

Test Group Name	FVGAV02.0VAL
Certificated Number	FVGAV02.0VAL -xxx
Engine displacements covered	2.0 liters
Arrangement and number of cylinders	I 4
Vehicle class (es) covered	LDV
Federal Emissions Standards Class	Tier 2 (Bin 5 UL 150K)
California Emissions Standards Class	LEV3 ULEV125

5.2 Test Group Emission Standards

Please refer to Certification Summary Information Report included in Section 7 for applicable emission standards.

Section 6	Pg. 1	Test Vehicle Description	Eng. Code	R.CH-No.:	Revision Date:
Part 1	Test Group:	FVGAV02.0VAL	All		

6. Test Vehicle Description

Please refer to included Summary Information Report included in Section 7 for the following vehicles:

Certificate Number: FVGAV02.0VAL-xxx
 Test Group: FVGAV02.0VAL
 Evaporative/Refueling Family: NA

VID	Config.	Vehicle Type	Tests Performed
VW361 50070 /15		<u>Cert. EDV / Fuel Economy</u>	FTP, HFET, US06, SC03, Cold CO
	0	VW Passat L6	
		<u>Fuel Economy</u>	FTP, HFET
	2	VW Beetle L6	
	3	VW Beetle Conv. L6	
VW370 50379 /15		<u>Fuel Economy</u>	FTP, HFET, US06, SC03, Cold CO
	0	Audi A3 L6	
	1	VW Golf L6	
	2	VW Jetta L6	
VW324 50038/15		<u>Fuel Economy</u>	FTP, HFET
	0	VW Passat M6	
	1	VW Beetle M6	
	2	VW Beetle Conv. M6	
VW370 40145/15		<u>Fuel Economy</u>	FTP, HFET
	0	VW Golf M6	
VW361 50063/15		<u>Fuel Economy</u>	FTP, HFET
	0	VW Jetta M6	

Section 7	Pg. 1	Test Results	Engine Code	R.CH-No.:	Revision Date:
Part 1	Test Group:	FVGAV02.0VAL	All		

7. Test Results

Please refer to included Certification Summary Information Report.

Certification Summary Information Report

Manufacturer	Volkswagen Group of America, Inc.	Manufacturer Code	VGA
Test Group	FVGAV02.0VAL	Evaporative/Refueling Family	N/A
Certificate Number	FVGAV02.0VAL-041	CARB Executive Order #	N/A
Certificate Issue Date	06/16/2014	Certificate Revision Date	N/A
Certificate Effective Date	06/16/2014	Conditional Certificate	Yes
CSI Revision #	N/A	CSI Submission/Revision Date	06/19/2014
Model Year	2015		

Test Group Information			
CSI Type	Update for Correction	Running Change Reference Number	N/A
GHG Exempt Status	Not Exempt		
Drive Sources and Fuel(s)			
Drive Source #1:	Combustion Engine		
	Fuel	Basic Fuel Metering System	Lean Burn Strategy Indicator
	Diesel	Common Rail Direct Diesel Injection	--

Hybrid Indicator	No		
Multiple Fuel Storage	--	Rechargeable Energy Storage System Indicator	--
Multiple Fuel Combustion	--	Off-board Charge Capable Indicator	--
Fuel Cell Indicator	--	EPA Vehicle Class	LDV
Federal Clean Fuel Vehicle	No	Federal Clean Fuel Vehicle Standard	--
Federal Clean Fuel Vehicle ILEV	No	California Partial Zero Emissions Vehicle Indicator	No
Durability Group Name	FVGADPDNNVAL	Durability Group Equivalency Factor	1
Reduced Fee Test Group	No	Certification Region Code(s)	FA, CA
Complies with HD GHG 2b/3 regulations?	No		
Introduction into Commerce Date	06/30/2014	CAP2000 Conditional Certificate?	Yes
Independent Commercial Importer?	--	Alternative Fuel Converter Certificate?	--
SFTP Compliance Indicator	Yes	SFTP Composite CO Option	No
OBD Compliance Type	CARB	OBD Demonstration Vehicle Test Group	FVGAV02.0VAL
Mfr Test Group Comments	--		
Mfr Exhaust / Evap Standards Comments	--		

Certification Summary Information Report

Test Group	FVGAV02.0VAL		Evaporative/Refueling Family			N/A	
Models Covered by this Certificate							
Carline Manufacturer	Division	Carline	Certification Region Code(s)	Drive System	Trans - Type	- # of Gears	Trans - Lockup
Volkswagen Group of America, Inc.	1 - Volkswagen	207 - Golf	Federal	2-Wheel Drive, Front	Manual	6	No
Volkswagen Group of America, Inc.	1 - Volkswagen	230 - Beetle	California + CAA Section 177 states	2-Wheel Drive, Front	Manual	6	No
Volkswagen Group of America, Inc.	1 - Volkswagen	221 - Jetta	California + CAA Section 177 states	2-Wheel Drive, Front	Automated Manual-Selectable (e.g. Automated Manual with paddles)	6	Yes
Volkswagen Group of America, Inc.	1 - Volkswagen	230 - Beetle	Federal	2-Wheel Drive, Front	Manual	6	No
Volkswagen Group of America, Inc.	1 - Volkswagen	235 - Beetle Convertible	California + CAA Section 177 states	2-Wheel Drive, Front	Automated Manual-Selectable (e.g. Automated Manual with paddles)	6	Yes
Volkswagen Group of America, Inc.	1 - Volkswagen	280 - Passat	Federal	2-Wheel Drive, Front	Automated Manual-Selectable (e.g. Automated Manual with paddles)	6	Yes
Volkswagen Group of America, Inc.	1 - Volkswagen	207 - Golf	California + CAA Section 177 states	2-Wheel Drive, Front	Manual	6	No
Volkswagen Group of America, Inc.	1 - Volkswagen	235 - Beetle Convertible	Federal	2-Wheel Drive, Front	Automated Manual-Selectable (e.g. Automated Manual with paddles)	6	Yes
Volkswagen Group of America, Inc.	1 - Volkswagen	280 - Passat	Federal	2-Wheel Drive, Front	Manual	6	No
Volkswagen Group of America, Inc.	2 - Audi	67 - A3	California + CAA Section 177 states	2-Wheel Drive, Front	Automated Manual-Selectable (e.g. Automated Manual with paddles)	6	Yes
Volkswagen Group of America, Inc.	1 - Volkswagen	280 - Passat	California + CAA Section 177 states	2-Wheel Drive, Front	Manual	6	No
Volkswagen Group of America, Inc.	1 - Volkswagen	230 - Beetle	California + CAA Section 177 states	2-Wheel Drive, Front	Automated Manual-Selectable (e.g. Automated Manual with paddles)	6	Yes
Volkswagen Group of America, Inc.	1 - Volkswagen	280 - Passat	California + CAA Section 177 states	2-Wheel Drive, Front	Automated Manual-Selectable (e.g. Automated Manual with paddles)	6	Yes
Volkswagen Group of America, Inc.	1 - Volkswagen	207 - Golf	California + CAA Section 177 states	2-Wheel Drive, Front	Automated Manual-Selectable (e.g. Automated Manual with paddles)	6	Yes
Volkswagen Group of America, Inc.	1 - Volkswagen	221 - Jetta	California + CAA Section 177 states	2-Wheel Drive, Front	Manual	6	No
Volkswagen Group of America, Inc.	1 - Volkswagen	221 - Jetta	Federal	2-Wheel Drive, Front	Manual	6	No

Certification Summary Information Report

Test Group	FVGAV02.0VAL			Evaporative/Refueling Family		N/A	
Volkswagen Group of America, Inc.	2 - Audi	67 - A3	Federal	2-Wheel Drive, Front	Automated Manual-Selectable (e.g. Automated Manual with paddles)	6	Yes
Volkswagen Group of America, Inc.	1 - Volkswagen	230 - Beetle	Federal	2-Wheel Drive, Front	Automated Manual-Selectable (e.g. Automated Manual with paddles)	6	Yes
Volkswagen Group of America, Inc.	1 - Volkswagen	207 - Golf	Federal	2-Wheel Drive, Front	Automated Manual-Selectable (e.g. Automated Manual with paddles)	6	Yes
Volkswagen Group of America, Inc.	1 - Volkswagen	221 - Jetta	Federal	2-Wheel Drive, Front	Automated Manual-Selectable (e.g. Automated Manual with paddles)	6	Yes

Engine Description

Hybrid Type	--	Hybrid Description	--
Engine Type	4-Stroke Compression Ignition	Mfr Engine Description	--
Engine Block Arrangement	Inline	Mfr Engine Block Arrangement Description	--
Camless Valvetrain Indicator	No	Oil Viscosity/Classification	5W40 VW 50501
Number of Cylinders/Rotors	4		

After Treatment Device(s) (ATD)

ATD Number	ATD Type	ATD Precious Metal	Substrate Material	Substrate Construction
1	Oxidation catalyst	Platinum + Paladium	Metal	Monolith
2	Diesel Particulate Filter	Platinum + Paladium	Ceramic	Monolith
3	Selective Catalytic Reduction	CU	Ceramic	Monolith
4	Selective Catalytic Reduction	CU	Ceramic	Monolith

Mfr After Treatment Device (ATD)

Comments	--
Direct Ozone Reduction (DOR) Device	Not Equipped
Mfr Emission Control Device Comments	Equipped with DPF and SCR after treatment

Certification Summary Information Report

Test Group	FVGAV02.0VAL		Evaporative/Refueling Family		N/A						
Engine Configuration Number 1											
Engine Displacement (liters)	2.0		Engine Rated Horsepower		150						
Number of Inlet Valves Per Cylinder	2		Number of Exhaust Valves Per Cylinder		2						
Air Aspiration Method	Turbocharged		Number of Air Aspiration Devices		1						
Air Aspiration Device Configuration	Single		Charge Air Cooler Type		Liquid						
Cylinder Deactivation Description	N/A		Variable Valve Lift System		N/A						
Variable Valve Timing System Description	N/A		Air/Fuel Sensor # 1 Description		N/A						
Number of Knock Sensors	0		EGR Type		Electronic/Electric						
Air/Fuel Sensor # 1 Type	Heated oxygen		Air Injection Type		--						
Mfr Air/Fuel Sensor Comments	--										
Exhaust Gas Recirculation	Yes										
Cooled Exhaust Gas Recirculation	Yes										
Closed Loop Air Injection System	No										
Mfr Engine Configuration Comments	Engine Code CRUA = Audi A3, VW Golf, Jetta Engine Code CVCA = VW Passat, Beetle, Beetle Conv.										
Official Test Numbers											
Test Group	Fuel	FTP	US06	SC03	Cold CO	Highway	EPA City Litmus Value	EPA City Litmus Threshold	EPA Highway Litmus Value	EPA Highway Litmus Threshold	CREE Weighting Factor
Diesel	FVGA10031167	FVGA10031167	FVGA10031169	FVGA10031170	FVGA10031171	FVGA10031168	30.0	28.7	41.6	40.0	N/A

Certification Summary Information Report

Test Group	FVGAV02.0VAL	Evaporative/Refueling Family	N/A						
Emission Data Vehicle Information									
Vehicle ID / Configuration	VW361 50070 /15 / 0								
Vehicle Model									
Represented Test Vehicle Make	VOLKSWAGEN	Represented Test Vehicle Model	Jetta						
Drive Sources and Fuel System Details									
	<table border="1"> <thead> <tr> <th>Drive Source and Fuel#</th> <th>Drive Source</th> <th>Fuel</th> </tr> </thead> <tbody> <tr> <td>1</td> <td>Combustion Engine</td> <td>Diesel</td> </tr> </tbody> </table>			Drive Source and Fuel#	Drive Source	Fuel	1	Combustion Engine	Diesel
Drive Source and Fuel#	Drive Source	Fuel							
1	Combustion Engine	Diesel							
Hybrid Indicator	N								
Multiple Fuel Storage	--	Multiple Fuel Combustion	--						
Fuel Cell Indicator	--	Rechargeable Energy Storage System Indicator	--						
Rechargeable Energy Storage System	--	Rechargeable Energy Storage System, if 'Other'	--						
Off-board charge Capable Indicator	--								
Transmission Type	Automated Manual- Selectable (e.g. Automated Manual with paddles)	# of Transmission Gears	6						
Engine Code	CRUA	Axle Ratio	3.33						
Displacement (liters)	1.968	Rated Horsepower	150						
Equivalent Test Weight (pounds)	3875	Air Aspiration Method	Turbocharged						
Drive Mode While Testing	2-Wheel Drive, Front	SIL Usage	Not equipped						
Aged Emission Components	4,000 (mi)								
Dynamometer Coefficients:									
	Target Coefficients			Set Coefficients			EPA Calculated Total Road Load Horse Power for City/Highway/Evap Coefficients		
Coefficient Category	A (lbf)	B (lbf/mph)	C (lbf/mph**2)	A (lbf)	B (lbf/mph)	C (lbf/mph**2)			
City/Highway/Evap	31.473	0.28937	0.016005	31.473	0.04702	0.017169	11.5		
Cold CO	34.621	0.31831	0.017606	12.686	0.05173	0.018886	N/A		
US06	31.473	0.28937	0.016005	11.533	0.04702	0.017169	N/A		
Manufacturer Test Vehicle Comments	MY 2015 VOLKSWAGEN Jetta tested as Passat sedan with Automated Manual Selectable 6 speed - ETW: 3875								

Certification Summary Information Report

Test Group	FVGAV02.0VAL	Evaporative/Refueling Family	N/A
Test #	FVGA10031167	Test Procedure	2 - CVS 75 and later (w/o can. load)
Exhaust Test # for this Evap Test	N/A	Test Fuel Type	19 - Federal Cert Diesel 7-15 PPM Sulfur
Test Date	03/25/2014	Fuel	Diesel
Vehicle Class	LDV/Passenger Car	DF Type	Mfr. Determined
Verify Test Lab ID	Volkswagen AG		

Test Results

Test Result Name	Unrounded Test Result	Verify Calculated FE MPG Equivalent Value
Bag 1 Carbon Dioxide	277.6	--
Bag 1 Fuel Economy	36.6	36.6
Bag 2 Carbon Dioxide	267.3	--
Bag 2 Fuel Economy	38.1	38.1
Bag 3 Carbon Dioxide	233.8	--
Bag 3 Fuel Economy	43.5	43.5
CH4 - Methane	0.008	--
Carbon Monoxide	0.02	--
Drive Trace Absolute Speed Change Rating	99.99	--
Drive Trace Energy Economy Rating	99.99	--
Drive Trace Inertia Work Ratio Rating	99.99	--
Formaldehyde	0	--
Manufacturer Fuel Economy	39.1	39.1
Nitrogen Oxide	0.031	--
Nitrous Oxide	0.014	--
Non-methane Hydrocarbon	0.0031	--
Non-methane organic gas (California)	0.0031	--
Particulate Matter	0.002	--
Total Hydrocarbon	0.0109	--

Test Result Name	Unrounded Test Result	Verify Calculated CREE/OPT-CREE
Carbon-Related Exhaust Emissions	260	260
Optional Carbon-Related Exhaust Emissions	264	264

Test Result Name	Unrounded Test Result	Verify Calculated CO2
Carbon dioxide	260	--

Manufacturer Test Comments

4k FTP (DIESEL) - Tested as VOLKSWAGEN Passat sedan 4 dr. EDV - ETW: 3875

Certification Summary Information Report

Test Group		FVGAV02.0VAL				Evaporative/Refueling Family				N/A		
Certification Region	Useful Life	Standard Level	Emission Name	Rounded Result	RAF	NMOG/NM HC Ratio	Diesel Adjustment Factor	Add DF	Mult DF	Certification Level	Standard	Pass/Fail
Fed	150,000 miles	Federal Tier 2 Bin 5	CO	0.020	--	--	0.0010 UP	0.073	--	0.09	4.20	Pass
Fed	150,000 miles	Federal Tier 2 Bin 5	CREE	260	--	--	0.0 UP	0.1	--	260	--	--
Fed	150,000 miles	Federal Tier 2 Bin 5	HC-NM+NOX-COMP	0.0309	--	--	0.0030 UP	--	--	0.031	0.630	Pass
Fed	150,000 miles	Federal Tier 2 Bin 5	METHANE	0.00800	--	--	0.0004 UP	0.0090	--	0.0174	0.0300	Pass
Fed	150,000 miles	Federal Tier 2 Bin 5	NMOG	0.00310	1	1	0.0004 UP	0.0070	--	0.0105	0.0900	Pass
Fed	150,000 miles	Federal Tier 2 Bin 5	NOX	0.0310	--	--	0.0026 UP	0.0065	--	0.040	0.070	Pass
Fed	150,000 miles	Federal Tier 2 Bin 5	OPT-CREE	264	--	--	0.0 UP	0.3	--	264	--	--
Fed	150,000 miles	Federal Tier 2 Bin 5	PM	0.0020	--	--	0.0003 UP	0.0013	--	0.004	0.010	Pass
Fed	150,000 miles	Federal Tier 2 Bin 5	PM-COMP	0.0023	--	--	0.0 UP	--	--	0.002	0.070	Pass
CA	150,000 miles	California LEV-III ULEV125	CO	0.020	--	--	0.0010 UP	0.073	--	0.09	2.10	Pass
CA	150,000 miles	California LEV-III ULEV125	NMOG	0.0031	1	1	0.0004 UP	0.007	--	0.010	99.999	Pass
CA	150,000 miles	California LEV-III ULEV125	NMOG+NOX	0.0341	1	1	0.0030 UP	--	--	0.051	0.125	Pass
CA	150,000 miles	California LEV-III ULEV125	NOX	0.0310	--	--	0.0026 UP	0.0065	--	0.040	99.999	Pass
CA	150,000 miles	California LEV-III ULEV125	PM	0.0020	--	--	0.0003 UP	0.00133	--	0.004	0.010	Pass

NOTE: For Non-charge depleting tests, the Rounded Result for CREE/OPT-CREE Emission names are Verify-calculated values.

Certification Summary Information Report

Test Group	FVGAV02.0VAL	Evaporative/Refueling Family	N/A
Test #	FVGA10031171	Test Procedure	11 - Cold CO
Exhaust Test # for this Evap Test	N/A	Test Fuel Type	19 - Federal Cert Diesel 7-15 PPM Sulfur
Test Date	04/05/2014	Fuel	Diesel
Vehicle Class	LDV/Passenger Car	DF Type	Mfr. Determined
Verify Test Lab ID	Volkswagen AG		

Test Results

Test Result Name	Unrounded Test Result	Verify Calculated FE MPG Equivalent Value
Bag 1 Carbon Dioxide	399	--
Bag 1 Fuel Economy	25.5	25.5
Bag 2 Carbon Dioxide	335.8	--
Bag 2 Fuel Economy	30.3	30.3
Bag 3 Carbon Dioxide	260.5	--
Bag 3 Fuel Economy	39.1	39.1
CH4 - Methane	0.0099	--
Carbon Monoxide	0.09	--
Drive Trace Absolute Speed Change Rating	99.99	--
Drive Trace Energy Economy Rating	99.99	--
Drive Trace Inertia Work Ratio Rating	99.99	--
Formaldehyde	0	--
Manufacturer Fuel Economy	31	31
Nitrogen Oxide	0.137	--
Nitrous Oxide	0.022	--
Non-methane Hydrocarbon	0.0115	--
Non-methane organic gas (California)	0.012	--
Particulate Matter	0	--
Total Hydrocarbon	0.0212	--

Test Result Name	Unrounded Test Result	Verify Calculated CO2
Carbon dioxide	328	--

Manufacturer Test Comments

4k Cold-CO - Tested as VOLKSWAGEN Passat sedan 4 dr. EDV - ETW: 3875

Certification Region	Useful Life	Standard Level	Emission Name	Rounded Result	RAF	NMOG/NM HC Ratio	Diesel Adjustment Factor	Add DF	Mult DF	Certification Level	Standard	Pass/Fail
CA	50,000 miles	California LEV-III ULEV125	CO	0.09	--	--	0.0010 UP	0.073	--	0.2	10.0	Pass

Certification Summary Information Report

Test Group	FVGAV02.0VAL	Evaporative/Refueling Family	N/A
Test #	FVGA10031168	Test Procedure	3 - HWFE
Exhaust Test # for this Evap Test	N/A	Test Fuel Type	19 - Federal Cert Diesel 7-15 PPM Sulfur
Test Date	03/25/2014	Fuel	Diesel
Vehicle Class	LDV/Passenger Car	DF Type	Mfr. Determined
Verify Test Lab ID	Volkswagen AG		

Test Results

Test Result Name	Unrounded Test Result	Verify Calculated FE MPG Equivalent Value
CH4 - Methane	0.0034	--
Carbon Monoxide	0	--
Drive Trace Absolute Speed Change Rating	99.99	--
Drive Trace Energy Economy Rating	99.99	--
Drive Trace Inertia Work Ratio Rating	99.99	--
Formaldehyde	0	--
Manufacturer Fuel Economy	60.2	60.2
Nitrogen Oxide	0	--
Nitrous Oxide	0.005	--
Non-methane Hydrocarbon	0.0008	--
Non-methane organic gas (California)	0.0008	--
Particulate Matter	0.001	--
Total Hydrocarbon	0.0041	--

Test Result Name	Unrounded Test Result	Verify Calculated CREE/OPT-CREE
Carbon-Related Exhaust Emissions	169	169
Optional Carbon-Related Exhaust Emissions	171	171

Test Result Name	Unrounded Test Result	Verify Calculated CO2
Carbon dioxide	169	--

Manufacturer Test Comments

4k HWFET - Tested as VOLKSWAGEN Passat sedan 4 dr. EDV - ETW: 3875

Certification Summary Information Report

Test Group		FVGAV02.0VAL			Evaporative/Refueling Family					N/A		
Certification Region	Useful Life	Standard Level	Emission Name	Rounded Result	RAF	NMOG/NM HC Ratio	Diesel Adjustment Factor	Add DF	Mult DF	Certification Level	Standard	Pass/Fail
Fed	150,000 miles	Federal Tier 2 Bin 5	CREE	169	--	--	0.0 UP	0.1	--	169	--	--
Fed	150,000 miles	Federal Tier 2 Bin 5	NOX	0.0000	--	--	0.0026 UP	0.0065	--	0.009	0.090	Pass
Fed	150,000 miles	Federal Tier 2 Bin 5	OPT-CREE	171	--	--	0.0 UP	0.3	--	171	--	--
CA	150,000 miles	California LEV-III ULEV125	NMOG	0.0008	1	1	0.0004 UP	0.007	--	0.008	99.999	Pass
CA	150,000 miles	California LEV-III ULEV125	NMOG+NOX	0.0008	1	1	0.0030 UP	--	--	0.017	0.125	Pass
CA	150,000 miles	California LEV-III ULEV125	NOX	0.0000	--	--	0.0026 UP	0.0065	--	0.009	99.999	Pass

NOTE: For Non-charge depleting tests, the Rounded Result for CREE/OPT-CREE Emission names are Verify-calculated values.

Certification Summary Information Report

Test Group	FVGAV02.0VAL	Evaporative/Refueling Family	N/A
Test #	FVGA10031169	Test Procedure	90 - US06
Exhaust Test # for this Evap Test	N/A	Test Fuel Type	19 - Federal Cert Diesel 7-15 PPM Sulfur
Test Date	03/25/2014	Fuel	Diesel
Vehicle Class	LDV/Passenger Car	DF Type	Mfr. Determined
Verify Test Lab ID	Volkswagen AG		

Test Results

Test Result Name	Unrounded Test Result	Verify Calculated FE MPG Equivalent Value
Bag 1 Carbon Dioxide	423.6	--
Bag 1 Fuel Economy	24	24
Bag 2 Carbon Dioxide	226.3	--
Bag 2 Fuel Economy	45	45
CH4 - Methane	0.0021	--
Carbon Monoxide	0.01	--
Drive Trace Absolute Speed Change Rating	99.99	--
Drive Trace Energy Economy Rating	99.99	--
Drive Trace Inertia Work Ratio Rating	99.99	--
Formaldehyde	0	--
Manufacturer Fuel Economy	37.7	37.7
Nitrogen Oxide	0.009	--
Nitrous Oxide	0.017	--
Non-methane Hydrocarbon	0.0006	--
Non-methane organic gas (California)	0.0006	--
Particulate Matter	0.001	--
SFTP Non-methane Hydrocarbon + Nitrogen Oxides for US06 or SC03	0.0096	--
Total Hydrocarbon	0.0026	--

Test Result Name	Unrounded Test Result	Verify Calculated CO2
Carbon dioxide	270	--

Manufacturer Test Comments

4k US06 - Tested as VOLKSWAGEN Passat sedan 4 dr. EDV - ETW: 3875

Certification Summary Information Report

Test Group		FVGAV02.0VAL			Evaporative/Refueling Family					N/A		
Certification Region	Useful Life	Standard Level	Emission Name	Rounded Result	RAF	NMOG/NM HC Ratio	Diesel Adjustment Factor	Add DF	Mult DF	Certification Level	Standard	Pass/Fail
Fed	4,000 miles	Federal Tier 2 Bin 5	CO	0.010	--	--	0.0010 UP	--	--	0.01	8.00	Pass
Fed	4,000 miles	Federal Tier 2 Bin 5	HC-NM+NOX	0.0096	--	--	0.0030 UP	--	--	0.013	0.140	Pass
Fed	150,000 miles	Federal Tier 2 Bin 5	CO	0.010	--	--	0.0010 UP	0.073	--	0.08	11.10	Pass
CA	150,000 miles	California LEV-III ULEV125	NMOG	0.0006	1	1	0.0004 UP	0.0070	--	0.008	99.999	Pass
CA	150,000 miles	California LEV-III ULEV125	NOX	0.0090	--	--	0.0026 UP	0.0065	--	0.018	99.999	Pass

Certification Summary Information Report

Test Group	FVGAV02.0VAL	Evaporative/Refueling Family	N/A
Test #	FVGA10031170	Test Procedure	95 - SC03
Exhaust Test # for this Evap Test	N/A	Test Fuel Type	19 - Federal Cert Diesel 7-15 PPM Sulfur
Test Date	03/28/2014	Fuel	Diesel
Vehicle Class	LDV/Passenger Car	DF Type	Mfr. Determined
Verify Test Lab ID	Volksawgen AG		

Test Results

Test Result Name	Unrounded Test Result	Verify Calculated FE MPG Equivalent Value
CH4 - Methane	0.0057	--
Carbon Monoxide	0	--
Drive Trace Absolute Speed Change Rating	99.99	--
Drive Trace Energy Economy Rating	99.99	--
Drive Trace Inertia Work Ratio Rating	99.99	--
Formaldehyde	0	--
Manufacturer Fuel Economy	30.6	30.6
Nitrogen Oxide	0.007	--
Nitrous Oxide	0.016	--
Non-methane Hydrocarbon	0.0005	--
Non-methane organic gas (California)	0.0005	--
Particulate Matter	0	--
SFTP Non-methane Hydrocarbon + Nitrogen Oxides for US06 or SC03	0.0075	--
Total Hydrocarbon	0.0061	--

Test Result Name	Unrounded Test Result	Verify Calculated CO2
Carbon dioxide	332	--

Manufacturer Test Comments

4k SC03 - Tested as VOLKSWAGEN Passat sedan 4 dr. EDV - ETW: 3875

Certification Region	Useful Life	Standard Level	Emission Name	Rounded Result	RAF	NMOG/NM HC Ratio	Diesel Adjustment Factor	Add DF	Mult DF	Certification Level	Standard	Pass/Fail
Fed	4,000 miles	Federal Tier 2 Bin 5	CO	0.000	--	--	0.0010 UP	--	--	0.00	2.70	Pass
Fed	4,000 miles	Federal Tier 2 Bin 5	HC-NM+NOX	0.0075	--	--	0.0030 UP	--	--	0.010	0.200	Pass
Fed	150,000 miles	Federal Tier 2 Bin 5	CO	0.000	--	--	0.0010 UP	0.073	--	0.07	3.70	Pass
CA	150,000 miles	California LEV-III ULEV125	NMOG	0.0005	1	1	0.0004 UP	0.0070	--	0.008	99.999	Pass
CA	150,000 miles	California LEV-III ULEV125	NOX	0.0070	--	--	0.0026 UP	0.0065	--	0.016	99.999	Pass

Certification Summary Information Report

Test Group		FVGAV02.0VAL			Evaporative/Refueling Family			N/A		
Consolidated List of Standards										
Exhaust Standards										
Cert Region		Federal			Cert/In-Use Code			Cert		
Vehicle Class		LDV/Passenger Car			Standard Level			Federal Tier 2 Bin 5		
Fuel		Diesel			Test Procedure			CVS 75 and later (w/o can. load)		
Useful Life	Emission Name	Rounded Result	RAF	NMOG / NMHC	Upward Diesel Adjustment Factor	Downward Diesel Adjustment Factor	Mult DF	Add DF	Std	
150,000 miles	CO	--	--	--	0.0010	-0.0291	--	0.073	4.20	
150,000 miles	CREE	--	--	--	0.0	0.0	--	0.1	999.9999	
150,000 miles	HC-NM+NOX-COMP	--	--	--	0.0030	-0.0900	--	--	0.630	
150,000 miles	HCHO	--	--	--	0.0	0.0	--	--	0.0180	
150,000 miles	METHANE	--	--	--	0.0004	-0.0129	--	0.0090	0.0300	
150,000 miles	N2O	--	--	--	0.0	0.0	--	--	0.010	
150,000 miles	NMOG	--	1	1	0.0004	-0.0129	--	0.0070	0.0900	
150,000 miles	NOX	--	--	--	0.0026	-0.0771	--	0.0065	0.070	
150,000 miles	OPT-CREE	--	--	--	0.0	0.0	--	0.3	999.9999	
150,000 miles	PM	--	--	--	0.0003	-0.0079	--	0.0013	0.010	
150,000 miles	PM-COMP	--	--	--	0.0	0.0	--	--	0.070	
Cert Region		Federal			Cert/In-Use Code			Cert		
Vehicle Class		LDV/Passenger Car			Standard Level			Federal Tier 2 Bin 5		
Fuel		Diesel			Test Procedure			US06		
Useful Life	Emission Name	Rounded Result	RAF	NMOG / NMHC	Upward Diesel Adjustment Factor	Downward Diesel Adjustment Factor	Mult DF	Add DF	Std	
4,000 miles	CO	--	--	--	0.0010	-0.0291	--	--	8.00	
4,000 miles	HC-NM+NOX	--	--	--	0.0030	-0.0900	--	--	0.140	
150,000 miles	CO	--	--	--	0.0010	-0.0291	--	0.073	11.10	

Certification Summary Information Report

Test Group	FVGAV02.0VAL				Evaporative/Refueling Family			N/A	
Cert Region	California + CAA Section 177 states				Cert/In-Use Code			Cert	
Vehicle Class	LDV/Passenger Car				Standard Level			California LEV-III ULEV125	
Fuel	Diesel				Test Procedure			SC03	
Useful Life	Emission Name	Rounded Result	RAF	NMOG / NMHC	Upward Diesel Adjustment Factor	Downward Diesel Adjustment Factor	Mult DF	Add DF	Std
150,000 miles	CO-COMP	--	--	--	0.0010	-0.0291	--	0.073	4.2
150,000 miles	NMOG	--	1	1	0.0004	-0.0129	--	0.0070	99.999
150,000 miles	NMOG+NOX-COMP	--	1	1	0	0	--	0	0.120
150,000 miles	NOX	--	--	--	0.0026	-0.0771	--	0.0065	99.999

Cert Region	California + CAA Section 177 states				Cert/In-Use Code			Cert	
Vehicle Class	LDV/Passenger Car				Standard Level			California LEV-III ULEV125	
Fuel	Diesel				Test Procedure			CVS 75 and later (w/o can. load)	
Useful Life	Emission Name	Rounded Result	RAF	NMOG / NMHC	Upward Diesel Adjustment Factor	Downward Diesel Adjustment Factor	Mult DF	Add DF	Std
150,000 miles	CO	--	--	--	0.0010	-0.0291	--	0.073	2.10
150,000 miles	HCHO	--	--	--	0.0	0.0	--	--	0.004
150,000 miles	NMOG	--	1	1	0.0004	-0.0129	--	0.007	99.999
150,000 miles	NMOG+NOX	--	1	1	0.0030	-0.0900	--	0	0.125
150,000 miles	NOX	--	--	--	0.0026	-0.0771	--	0.0065	99.999
150,000 miles	PM	--	--	--	0.0003	-0.0079	--	0.00133	0.010

Cert Region	Federal				Cert/In-Use Code			Cert	
Vehicle Class	LDV/Passenger Car				Standard Level			Federal Tier 2 Bin 5	
Fuel	Diesel				Test Procedure			SC03	
Useful Life	Emission Name	Rounded Result	RAF	NMOG / NMHC	Upward Diesel Adjustment Factor	Downward Diesel Adjustment Factor	Mult DF	Add DF	Std
4,000 miles	CO	--	--	--	0.0010	-0.0291	--	--	2.70
4,000 miles	HC-NM+NOX	--	--	--	0.0030	-0.0900	--	--	0.200
150,000 miles	CO	--	--	--	0.0010	-0.0291	--	0.073	3.70

Certification Summary Information Report

Test Group	FVGAV02.0VAL				Evaporative/Refueling Family			N/A	
Cert Region	California + CAA Section 177 states				Cert/In-Use Code			Cert	
Vehicle Class	LDV/Passenger Car				Standard Level			California LEV-III ULEV125	
Fuel	Diesel				Test Procedure			US06	
Useful Life	Emission Name	Rounded Result	RAF	NMOG / NMHC	Upward Diesel Adjustment Factor	Downward Diesel Adjustment Factor	Mult DF	Add DF	Std
150,000 miles	CO-COMP	--	--	--	0	0	--	0	4.2
150,000 miles	NMOG	--	1	1	0.0004	-0.0129	--	0.0070	99.999
150,000 miles	NMOG+NOX-COMP	--	1	1	0	0	--	0	0.120
150,000 miles	NOX	--	--	--	0.0026	-0.0771	--	0.0065	99.999

Cert Region	California + CAA Section 177 states				Cert/In-Use Code			Cert	
Vehicle Class	LDV/Passenger Car				Standard Level			California LEV-III ULEV125	
Fuel	Diesel				Test Procedure			HWFE	
Useful Life	Emission Name	Rounded Result	RAF	NMOG / NMHC	Upward Diesel Adjustment Factor	Downward Diesel Adjustment Factor	Mult DF	Add DF	Std
150,000 miles	NMOG	--	1	1	0.0004	-0.0129	--	0.007	99.999
150,000 miles	NMOG+NOX	--	1	1	0.0030	-0.0900	--	0	0.125
150,000 miles	NOX	--	--	--	0.0026	-0.0771	--	0.0065	99.999

Cert Region	California + CAA Section 177 states				Cert/In-Use Code			Cert	
Vehicle Class	LDV/Passenger Car				Standard Level			California LEV-III ULEV125	
Fuel	Diesel				Test Procedure			Cold CO	
Useful Life	Emission Name	Rounded Result	RAF	NMOG / NMHC	Upward Diesel Adjustment Factor	Downward Diesel Adjustment Factor	Mult DF	Add DF	Std
50,000 miles	CO	--	--	--	0.0010	-0.0291	--	0.073	10.0

Certification Summary Information Report

Test Group	FVGAV02.0VAL		Evaporative/Refueling Family				N/A		
Cert Region	Federal		Cert/In-Use Code				Cert		
Vehicle Class	LDV/Passenger Car		Standard Level				Federal Tier 2 Bin 5		
Fuel	Diesel		Test Procedure				HWFE		
Useful Life	Emission Name	Rounded Result	RAF	NMOG / NMHC	Upward Diesel Adjustment Factor	Downward Diesel Adjustment Factor	Mult DF	Add DF	Std
150,000 miles	CREE	--	--	--	0.0	0.0	--	0.1	999.9999
150,000 miles	NOX	--	--	--	0.0026	-0.0771	--	0.0065	0.090
150,000 miles	OPT-CREE	--	--	--	0.0	0.0	--	0.3	999.9999

Certification Summary Information Report

Test Group	FVGAV02.0VAL	Evaporative/Refueling Family	N/A
Glossary			
Useful Life			
4	4,000 miles	120	120,000 miles
50	50,000 miles	150	150,000 miles
100	100,000 miles		
Emission Name			
HC-TOTAL	Total Hydrocarbon	MFR FE	Manufacturer Fuel Economy
CO	Carbon Monoxide	HC	Hydrocarbon for Running Loss and ORVR
CO2	Carbon dioxide	METHANE	CH4 - Methane
CREE	Carbon-Related Exhaust Emissions	METHANOL	CH3OH - Methanol
OPT-CREE	Optional Carbon-Related Exhaust Emissions	N2O	Nitrous Oxide
NOX	Nitrogen Oxide	SPITBACK	Spitback Hydrocarbon in grams
PM	Particulate Matter	AMP-HRS	Integrated Amp-hours
PM-COMP	SFTP Composite Particulate Matter	START-SOC	System Start State of Charge Watt-hours
HC-NM	Non-methane Hydrocarbon	END-SOC	System End State of Charge Watt-hours
OMHCE	Organic material Hydrocarbon Equivalent	ACT-DISTANCE	Actual Distance Driven (miles)
OMNMHCE	Organic material non-methane HC equivalent	AS-VOLT	Average System Voltage
NMOG	Non-methane organic gas (California)	CO2 BAG 1	Bag 1 Carbon Dioxide
HCHO	Formaldehyde	CO2 BAG 2	Bag 2 Carbon Dioxide
H3C2HO	Acetaldehyde	CO2 BAG 3	Bag 3 Carbon Dioxide
HC-NM+NOX	SFTP Non-methane Hydrocarbon + Nitrogen Oxides for US06 or SC03	CO2 BAG 4	Bag 4 Carbon Dioxide
HC-NM+NOX-COMP	SFTP Composite Non-methane Hydrocarbon + Nitrogen Oxides	NMOG+NOX	Non-methane organic gases plus Nitrogen Oxides
CO-COMP	SFTP Composite Carbon Monoxide	NMOG+NOX-COMP	SFTP Composite Non-methane Organic Gases + Nitrogen Oxides
ETHANOL	C2H5OH - Ethanol	DT-IWRR	Drive Trace Inertia Work Ratio Rating
FE BAG 1	Bag 1 Fuel Economy	DT-ASCR	Drive Trace Absolute Speed Change Rating
FE BAG 2	Bag 2 Fuel Economy	DT-EER	Drive Trace Energy Economy Rating
FE BAG 3	Bag 3 Fuel Economy	COMB-CREE	Combined Carbon-Related Exhaust Emissions
FE BAG 4	Bag 4 Fuel Economy	COMB-OPT-CREE	Combined Optional Carbon-Related Exhaust Emissions
Certification Region			
CA	California + CAA Section 177 states	FA	Federal
Exhaust Emission Standard Level			
B1	Federal Tier 2 Bin 1	L2SULEV30	California LEV-II SULEV30
B2	Federal Tier 2 Bin 2	L2LEV395	California LEV-II LEV395
B3	Federal Tier 2 Bin 3	L2ULEV340	California LEV-II ULEV340
B4	Federal Tier 2 Bin 4	L2LEV630	California LEV-II LEV630
B5	Federal Tier 2 Bin 5	L2ULEV570	California LEV-II ULEV570
B6	Federal Tier 2 Bin 6	L3LEV160	California LEV-III LEV160
B7	Federal Tier 2 Bin 7	L3ULEV125	California LEV-III ULEV125
B8	Federal Tier 2 Bin 8	L3ULEV70	California LEV-III ULEV70

Certification Summary Information Report

Test Group	FVGAV02.0VAL	Evaporative/Refueling Family		N/A
B9	Federal Tier 2 Bin 9	L3ULEV50	California LEV-III ULEV50	
B10	Federal Tier 2 Bin 10	L3SULEV30	California LEV-III SULEV30	
B11	Federal Tier 2 Bin 11	L3SULEV20	California LEV-III SULEV20	
HDV1	HDV1 (Federal HD chassis Class 2b GVW 8501-10000)	L3LEV395	California LEV-III LEV395	
HDV2	HDV2 (Federal HD chassis Class 3 GVW 10001-14000)	L3ULEV340	California LEV-III ULEV340	
L2	California LEV-II LEV	L3ULEV250	California LEV-III ULEV250	
L2OP	California LEV-II LEV Optional	L3ULEV200	California LEV-III ULEV200	
U2	California LEV-II ULEV	L3SULEV170	California LEV-III SULEV170	
S2	California LEV-II SULEV	L3SULEV150	California LEV-III SULEV150	
ZEV	California ZEV	L3LEV630	California LEV-III LEV630	
OT	Other	L3ULEV570	California LEV-III ULEV570	
T1	Federal Tier 1	L3ULEV400	California LEV-III ULEV400	
PZEV	California PZEV	L3ULEV270	California LEV-III ULEV270	
L2LEV160	California LEV-II LEV160	L3SULEV230	California LEV-III SULEV230	
L2ULEV125	California LEV-II ULEV125	L3SULEV200	California LEV-III SULEV200	
Transmission Type Code				
AMS	Automated Manual- Selectable (e.g. Automated Manual with paddles)	M	Manual	
A	Automatic	OT	Other	
AM	Automated Manual	SA	Semi-Automatic	
CVT	Continuously Variable	SCV	Selectable Continuously Variable (e.g. CVT with paddles)	
Drive System Code				
4	4-Wheel Drive	P	Part-time 4-Wheel Drive	
F	2-Wheel Drive, Front	A	All Wheel Drive	
R	2-Wheel Drive, Rear			
Additional Terms and Acronyms				
AFC	Alternative Fuel Converter	ICI	Independent Commercial Importer	
CSI	Certificate Summary Information	ORVR	Onboard Refueling Vapor Recovery	
DF	Deterioration Factor	SIL	Shift Indicator Light	
Evap	Evaporation, Evaporative	Trans	Transmission	

Section 8	Pg. 1	Testing Waiver Statements	Engine Code	R.CH-No.:	Revision Date:
Part 1	Test Group:	FVGAV02.0VAL	All		

8. Emission Testing Waiver Statements

Please refer to Section 8 of the Common Sections Binder for the complete text of the following statements.

High Altitude Exhaust Emissions
Particulate Matter
HCHO Compliance
OBD Compliance
Leak Free Exhaust System
N2O Compliance

Section 9	Pg. 1	OBD System Description	Engine Code	R.CH-No.:	Revision Date:
Part 1	Test Group:	FVGAV02.0VAL	All		

9.0 **OBD System Description**

9.1 **General Description**
Please refer to Common Section

9.2 **Summary Table**
Please refer to Section 16 Confidential Section

9.3 **California Air Resources Board OBD System Approval Letter.**
Please refer to Section 16 Confidential Section

Section 11	Pg. 1	AECD Descriptions	Engine Code	R.CH-No.:	Revision Date:
Part 1	Test Group:	FVGAV02.0VAL	All		

11. Auxiliary Emission Control Devices (AECD) Descriptions

Please see Section 16.11 of Part1
This refers to OBD-Group FVGA-IW TDI SCR

11.6 Emission Control Devices (1)

Control Device Configuration	Parameters Sensed	Parameters Controlled	Justification
Engine Coolant Temperature Sensor	coolant temperature	Fuel injection, PM-trap regeneration, EGR	A
Fuel Temperature Sensor	fuel temperature	Fuel injection	A
Exhaust Temperature Sensor EGT1	exhaust temperature upstream Turbo Charger	TC protection, PM-trap regeneration	A
EGR Temperature Sensor (Low pressure EGR)	exhaust temperature post EGR Valve	EGR Rate	A
DOC Temperature Sensor (EGT2)	exhaust temperature upstream DOC	PM-trap regeneration	A
DPF Temperature Sensor (EGT3)	exhaust temperature upstream DPF	PM-trap regeneration	A
DPF Differential Pressure Sensor	exhaust pressure difference along PM-Trap	PM-trap load	A
Temperature Sensor (EGT4)	exhaust temperature downstream PM-Trap, upstream SCRC	PM-trap load, soot loading model, SCR Control	A
Cylinder Pressure Sensors	combustion pressure	Fuel injection	A
Boost Pressure Sensor (p2)	charge air pressure	charge air pressure	A
Boost Pressure Temperature Sensor (T2)	charge air temperature	charge air pressure	A
Altitude Sensor	ambient air pressure	fuel injection, air mass, charge air pressure	A

Justification: A: Active under all normal driving condition. Function /Operation substantially included in test procedures as well as during customer's use.

11.6 Overview: Emission Control Devices (2)

Control Device Configuration	Parameters Sensed	Parameters Controlled	Justification
Heated Oxygen Sensor	oxygen content of exhaust upstream oxidation catalyst (DOC)	EGR efficiency, PM-trap load	A
Fuel Pressure Sensor	Fuel Pressure	Fuel Injection	A
Mass Air Flow Sensor	Air Flow into cylinders	Fuel Injection, EGR Rate	A
Nitrogen Oxide Sensor downstream SCRC	NOx concentration downstream SCRC	SCR Diagnostic	A
Differential Pressure Sensor Low Pressure EGR	Delta Pressure	Diagnostic Purposes	A

Justification: A: Active under all normal driving condition. Function /Operation substantially included in test procedures as well as during customer's use.

Section 12	Pg. 1	Test Group Description	Engine Code:	R.CH-No.:	Revision Date:
Part 1	Test Group: FVGAV02.0VAL		all		

List of Certified Vehicles

Durability Group :	FVGADPDNNVAL	Engine Displacement :	2.0 liters
Test Group	FVGAV02.0VAL	Valve / Cylinder :	4
Evap Family :	N/A	Sales Area :	50 states
Emission Control System *:	DFI/TC/CAC/OC/WR-HO2S/DPF+SCRC/SCRC/ NOXS/EGR/EGRC	Motor Management System¹⁾ :	EDC17C64-2.2

Model	Carline	Transmission Type / OD #	Engine Code	Transmission Code	SIL	Curb Wgt.	ETW	Fuel Tank Capacity [l]	Canister working capacity [g]	Tire size
Audi	A3	SA6 / 2	CRUA	DQ250-6F ##	n.a.	3262	3500	55	N/A	195/65 R15

*) Use J1930 Abbreviations

#) OD = Overdrive, 1 =final gear ratio >1 ; 2 =final gear ratio < 1

##) double clutch transmission; 6 gears, front drive

Section 12	Pg. 2	Test Group Description	Engine Code:	R.CH-No.:	Revision Date:
Part 1	Test Group: FVGAV02.0VAL		all		

List of Certified Vehicles

Durability Group :	FVGADPDNNVAL	Engine Displacement :	2.0 liters
Test Group	FVGAV02.0VAL	Valve / Cylinder :	4
Evap Family :	N/A	Sales Area :	50 states
Emission Control System *:	DFI/TC/CAC/OC/WR-HO2S/DPF+SCRC/SCRC/ NOXS/EGR/EGRC	Motor Management System¹⁾ :	EDC17C64-2.2

Model	Carline	Transmission Type / OD #	Engine Code	Transmission Code	SIL	Curb Wgt.	ETW	Fuel Tank Capacity [l]	Canister working capacity [g]	Tire size
Passat	Passat	SA6 / 2	CVCA	DQ250-6F ##	n.a.	3538	3875	70	N/A	215/60 R 16 215/55 R 17 235/45 R 18
Passat	Passat	M 6 / 2	CVCA	MQ350-6F D1	n.a.	3409	3750	70	N/A	215/60 R 16 215/55 R 17 235/45 R 18

*) Use J1930 Abbreviations

#) OD = Overdrive, 1 =final gear ratio >1 ; 2 =final gear ratio < 1

##) double clutch transmission; 6 gears, front drive

Section 12	Pg. 3	Test Group Description	Engine Code:	R.CH-No.:	Revision Date:
Part 1	Test Group: FVGAV02.0VAL		all		

List of Certified Vehicles

Durability Group :	FVGADPDNNVAL	Engine Displacement :	2.0 liters
Test Group	FVGAV02.0VAL	Valve / Cylinder :	4
Evap Family :	N/A	Sales Area :	50 states
Emission Control System *:	DFI/TC/CAC/OC/WR-HO2S/DPF+SCRC/SCRC/ NOXS/EGR/EGRC	Motor Management System¹⁾ :	EDC17C64-2.2

Model	Carline	Transmission Type / OD #	Engine Code	Transmission Code	SIL	Curb Wgt.	ETW	Fuel Tank Capacity [l]	Canister working capacity [g]	Tire size
Beetle	Beetle	SA6 / 2	CVCA	DQ250-6F ##	n.a.	3281	3625	55	N/A	205/65 R16 215/55 R17
Beetle	Beetle	M 6 / 2	CVCA	MQ350-6F D1	n.a.	3248	3500	55	N/A	205/65 R16 215/55 R17
Beetle Convertible	Beetle Convertible	SA6 / 2	CVCA	DQ250-6F ##	n.a.	3433	3750	55	N/A	205/65 R16 215/55 R17
Beetle Convertible	Beetle Convertible	M 6 / 2	CVCA	MQ350-6F D1	n.a.	3384	3625	55	N/A	205/65 R16 215/55 R17

*) Use J1930 Abbreviations

#) OD = Overdrive, 1 =final gear ratio >1 ; 2 =final gear ratio < 1

##) double clutch transmission; 6 gears, front drive

Section 12	Pg. 4	Test Group Description	Engine Code:	R.CH-No.:	Revision Date:
Part 1	Test Group: FVGAV02.0VAL		all		

List of Certified Vehicles

Durability Group :	FVGADPDNNVAL	Engine Displacement :	2.0 liters
Test Group	FVGAV02.0VAL	Valve / Cylinder :	4
Evap Family :	N/A	Sales Area :	50 states
Emission Control System *:	DFI/TC/CAC/OC/WR-HO2S/DPF+SCRC/SCRC/ NOXS/EGR/EGRC	Motor Management System¹⁾ :	EDC17C64-2.2

Model	Carline	Transmission Type / OD #	Engine Code	Transmission Code	SIL	Curb Wgt.	ETW	Fuel Tank Capacity [l]	Canister working capacity [g]	Tire size
Jetta	Jetta	SA6 / 2	CRUA	DQ250-6F ##	n.a.	3382	3625	55	N/A	195/65 R 16 225/40 R 18
Jetta	Jetta	M 6 / 2	CRUA	MQ350-6F D2	n.a.	3329	3625	55	N/A	195/65 R 16 225/40 R 18
Golf	Golf	SA6 / 2	CRUA	DQ250-6F ##	n.a.	3236	3500	55	N/A	195/65 R 16 225/40 R 18
Golf	Golf	M 6 / 2	CRUA	MQ350-6F D2	n.a.	3190	3500	55	N/A	195/65 R 16 225/40 R 18

*) Use J1930 Abbreviations

#) OD = Overdrive, 1 =final gear ratio >1 ; 2 =final gear ratio < 1

##) double clutch transmission; 6 gears, front drive

Section 12	Pg. 5	Test Group Description	Engine Code:	R.CH-No.:	Revision Date:
Part 1	Test Group: FVGAV02.0VAL		all		

Engine Code	Engine Code Characteristic							
	Cat Code			Compression ratio	TC index	Idle	Power	Torque
	Oxi-CAT	PM-TRAP	SCR	[1]	[1]	[rpm]	HP @ RPM	[Nm] @ RPM
CRUA CVCA	DF635	SF630	DF500B	16.2 ± 1.0	BM70B	770 +/- 100	150 @ 3500	320 @ 1750 - 3500

Transmission Code	Transmission Code Characteristic												
	Basic drivetrain layout	Transmission Type / OD #	Lock-Up rpm		Gearbox Ratios								
			Gear	min/max	Axle	Gear 1	Gear 2	Gear 3	Gear 4	Gear 5	Gear 6	N/V Ratio	Tire Size
DQ250-6F	2WD	SA6 / 2	1 to 6	always	4.375 3.333	3.462	1.905	1.125	0.756	0.763	0.622	28,7 28,8 27.3	195/65 R 15 205/55 R 16 235/45 R 18
MQ350-6F D1	2WD	M 6 / 2	1 to 6	always	3.684 2.917	3.769	1.958	1.257	0.870	0.857	0.717	27.5	215/55 R 17
MQ350-6F D2	2WD	M 6 / 2	1 to 6	always	3.450 2.760	3.769	1.958	1.257	0.870	0.857	0.717	27.5 27.3	205/55 R 16 225/40 R 18

#) OD = Overdrive, 1 =final gear ratio >1 ; 2 =final gear ratio < 1

Section 13	Pg. 1	Projected Sales/Compl. Plans	Engine Code	R.CH-No.:	Revision Date:
Part 1	Test Group:	FVGAV02.0VAL	All		

13.01 Test Group Projected Sales

Please Refer to Section 16 Confidential Information, of this test group

13.02 Compliance Plans

Refer to Section 16 Confidential Information, of the Common Sections Binder

Section 14	Pg. 1	Request for Certificate	Engine Code	R.CH-No.:	Revision Date:
Part 1	Test Group:	FVGAV02.0VAL	All		

14. Request for Certificate

14.01. Statement of Compliance

The Volkswagen Group states that any element of design, system, or emission control device installed on or incorporated in the Volkswagen Group's new motor vehicles or new motor vehicle engines for the purpose of complying with standards prescribed under section 202 of the Clean Air Act, will not, to the best of the Volkswagen Group's information and belief, cause the emission into the ambient air of pollutants in the operation of its motor vehicles or motor vehicle engines which cause or contribute to an unreasonable risk to public health or welfare except as specifically permitted by the standards prescribed under section 202 of the Clean Air Act. The Volkswagen Group further states that any element of design, system, or emission control device installed or incorporated in the Volkswagen Group's new motor vehicles or new motor vehicle engines, for the purpose of complying with standards prescribed under section 202 of the Clean Air Act, will not, to the best of the Volkswagen Group's information and belief, cause or contribute to an unreasonable risk to public safety.

The term pollutant means:

- a. Diesel particulates
- b. Nickel
- c. MMT combustion products
- d. Ammonia
- e. Sulfates
- f. Hydrogen sulfide
- g. Hydrogen cyanide
- h. Ruthenium combustion products
- i. Nitrosamines

or any other pollutant which VW/AUDI has identified which can reasonably be expected to be emitted from these vehicles.

All vehicles have been tested in accordance with good engineering practice to ascertain that such test vehicles meet the requirement of this section for the useful life of the vehicle.

Section 14	Pg. 2	Request for Certificate	Engine Code	R.CH-No.:	Revision Date:
Part 1	Test Group:	FVGAV02.0VAL	All		

The test vehicles with respect to which data are submitted are in all material respects as described in the application for certification, have been tested in accordance with the applicable test procedures utilizing the fuels and equipment described in the application for certification, they meet the requirement of such tests, and on the basis of such tests, they conform to the requirements of the regulations in 40 CFR, Part 86, Subpart S.

The vehicles for which certification is requested conform to the requirements in 86.1810-01 (a) and the description of tests performed to ascertain compliance with the general standards in 86.1810-01 (a) and the data derived from such tests are available.

The testing described under 86.1824-01 has been designed and conducted in accordance with good engineering practice to assure that the vehicles covered by a certificate issued under 86.1848-01 will meet the evaporative emission standards in 86.1811-01 for the useful life of the vehicle.

14.02. Durability Statement

Based on the Volkswagen Group's good engineering judgment, all the vehicles described in this Application for Certification comply with all applicable intermediate and full useful life standards.

Section 15	Pg. 2	Other Information	Engine Code	R.CH-No.:	Revision Date:
Part 1	Test Group:	FVGAV02.0VAL	All		

15. Other Information (contd.)

15.01 Revision Index

Revision Index for Test Group Only

Part 2

Sect No.	Page No.	Date:	Comment:	R/C No.

Section 15	Pg. 3	Other Information	Engine Code:	R.CH-No.:	Revision Date:
Part 1	Test Group: FVGAV02.0VAL		all		

15. Other Information (contd.)

15.02 Running Change (RC) / Field Fix (FF) Log

Running Change / Field Fix Log for test group only.

Model Year: 2015
Test Group: FVGAV02.0VAL
Evaporative Family: NA

RC / FF No.	Description of Change / Reason	Date

VOLKSWAGEN

GROUP OF AMERICA

Mr. Jim Snyder
Compliance and Innovative Strategies Division
Office of Mobile Sources
U. S. Environmental Protection Agency
2000 Traverwood Drive
Ann Arbor, MI 48105

Leonard W. Kata Name
Manager Title
EEO Department
248-754-4204 Phone
248-754-4207 Fax
leonard.kata@vw.com E-Mail

March 28, 2014 Date

Subject: MY 2015 Volkswagen Light Duty Vehicle Initial Application for Emissions
Certification for Diesel Test Group FVGAV02.0VAL

Dear Mr. Snyder,

We submit, with this letter, the model year 2015 Part 1 Application for Emissions
Certification for the following Test Group:

VOLKSWAGEN GROUP OF AMERICA, INC.
3800 HAMLIN ROAD
AUBURN HILLS, MI 48326
PHONE +1 248 754 5000

<u>Test Group</u>	<u>Standards</u>	<u>Sales Area</u>
FVGAV02.0VAL	Tier 2 BIN 5 (150K UL) LEV-III ULEV125	Federal California

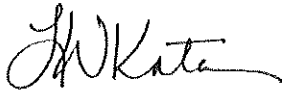
Copies of the Certification Fee filing form and OBD approval letter are contained in
sections 15 and 16 of the included electronic application.

All vehicles within this test group comply with all applicable regulations contained in
40 CFR Part 86 and the compliance statements contained in sections 8 and 14.

This submission constitutes our final application and the request for issuance of a
Certificate of Conformity.

If you have any questions with regard to this information please contact our office in
Auburn Hills at (248) 754-4219.

Sincerely,



Leonard W. Kata
Volkswagen Group of America, Inc.

Engineering and Environmental Office

Enclosure(s)



U.S. Environmental Protection Agency
Motor Vehicle and Engine Compliance Program
On-Highway Fee Filing Form

For Certification Applications Received In Calendar Year 2014

Manufacturer Name VOLKSWAGEN Group of America, Inc.

Address 3800 Hamlin Road

City/State/Zip Code/Country Auburn Hills, MI 48326

On-Highway Certification Request Type (check one)

- LDV/LDT/MDPV/HDV (Chassis cert) FEDERAL (\$28,528) HDV EVAP-ONLY (\$563)
- LDV/LDT/MDPV/HDV (Chassis cert) CAL-ONLY (\$15,077) HDE CALIF-ONLY (\$563)
- HDE (Engine Dyno cert) FEDERAL (\$38,464) MOTORCYCLE (\$1,717)
- LD/MDPV/HDV ICI (\$88,591)

EPA standard family or test group:

F V G A V 0 2 . 0 V A L

Amount paid (U.S. Funds Only):

\$ 28,528.00

Enter the check number, or the statement "WIRE" or "ACH":

EFT

Reduced Fee Section (40 CFR §1027.120)

Reduced fee calculation (minimum initial payment \$750): Total number of vehicles/units covered: _____

Aggregate retail sales price of the vehicles/units: \$ _____ x 1% = \$ _____

Check box if an Independent Commercial Importer: List the VIN of imported vehicles/engines below:

Company Representative: Richard E. Thomas Signature:

Title: Emission Cert Stratagist Phone/Fax: 248 754 4213 / 248 754 4207 Date: 04/16/2014

E-mail Address: Richard.Thomas@VW.com

Submission of payments and forms:

- (1) Online: **Forms** may be found and submitted with or without **payments** online at www.Pay.gov.
- (2) By mail: For check payments only, send **checks** and this **form** to:

Environmental Protection Agency
Motor Vehicle and Engine Compliance Program
P.O. Box 979032
St. Louis, MO 63197-9000

- (3) Transmit offline **Wire payments** to the New York Federal Reserve Bank. (See Instructions, p.2)
- (4) Transmit offline **ACH payments** to the Federal Reserve Bank of Cleveland. (Instructions, p.2)
- (5) **Forms** not submitted under (1) and (2) above can be sent as email attachments to Fees@epa.gov. Forms and payments sent in ways other than the above may be delayed or ineffective. See the Instructions for sending checks and forms by private mail service (e.g., Federal Express).

The public reporting and recordkeeping burden for this collection of information is estimated to average 18 minutes per response. Send comments on EPA's need for this information, the accuracy of the provided burden estimate, and any suggested methods for minimizing respondent burden, including through the use of automated collection techniques, to the Director, Collection Strategies Division, U.S. Environmental Protection Agency (2822T), 1200 Pennsylvania Ave., N.W., Washington, D.C. 20460. Include the OMB control number in any correspondence. Do not send the completed Form 3520-29 to this address.

VOLKSWAGEN

GROUP OF AMERICA

Ms. Annette Hebert, Division Chief
Emissions Compliance, Automotive Regulations and
Science Division (ECAR)
State of California
Air Resources Board Laboratory
9528 Telstar Avenue
El Monte, CA 91731

Leonard W. Kata Name
Manager – Emis. Cert. Title
EEO Department
248-754-4204 Phone
248-754-4207 Fax
leonard.kata@vw.com E-Mail

May 28, 2014 Date

Subject: MY 2015 Volkswagen Light Duty Vehicle Initial Application for Emissions
Certification for Diesel Test Group FVGAV02.0VAL.

Dear Ms. Hebert,

We submit, with this letter, the model year 2015 Part 1 Application for Emissions
Certification for the following Test Group:

<u>Test Group</u>	<u>Standards</u>	<u>Sales Area</u>
FVGAV02.0VAL	Tier 2 BIN 5 (150K UL) LEV-III ULEV125	Federal California

VOLKSWAGEN GROUP OF AMERICA, INC.
3800 HAMLIN ROAD
AUBURN HILLS, MI 48326
PHONE +1 248 754 5000

The EPA Certificate of Conformity for the test group was uploaded to the Document
Management System with the application.

This submission constitutes our final application and the request for issuance of the
Executive Order.

If you have any questions with regard to this information please contact our office in
Auburn Hills at (248) 754-4219.

Sincerely,



Leonard W. Kata
Volkswagen Group of America, Inc.

Engineering and Environmental Office

Enclosure(s)

Section 17	Pg. 1	California ARB Information	Engine Code	R.CH-No.:	Revision Date
Test Group		FVGAV02.0VAL	all		

17.01 **California ARB Information**

Please refer to the Common Section for the following information

Production Vehicle same as Test Vehicle Statement

Labeling Durability Statement

Drivability Statement

ASM Compliance Statement

17.02 **Fill Pipe Specifications**

Not applicable.

17.03 **Evaporative Emission Deterioration Program**

Not applicable.

Section 17	Pg. 2	California ARB Information	Engine Code	R.CH-No.:	Revision Date
Test Group		FVGAV02.0VAL	all		

17.04 **Assembly line NMOG / NMHC Factor**

F_{NMOG}: **1.0** (no RAF applied)
According to ARB regulations

F_{HCHO}: Compliance covered by statement according to regulations

17.05 **Continuity of Emissions**

not applicable

FTP at 50°F and at 20°F not included in regulations for diesel.

Section 17	Pg. 3	California ARB Information	Engine Code:	R.CH-No.:	Revision Date:
Part 1	Test Group: FVGAV02.0VAL		all		

E.O.# _____

Page 1 of 3

**2015 AIR RESOURCES BOARD SUPPLEMENTAL CERTIFICATION SUMMARY SHEET
PASSENGER CARS, LIGHT-DUTY TRUCKS AND MEDUM-DUTY VEHICLES**

Manufacturer: Volkswagen Durability Group: FVGADPDNNVAL Test Group: FVGAV02.0VAL

Evap Fam: 1) n.a.

Evap Std: 1) n.a.

Evaporative Emission T.P.: N.A.

Zero-Evap NMOG Credit: Yes ___ No X

Exh Std: CA Tier-1 ___ TLEV ___ LEV ___ ULEV125 X SULEV ___ ; US EPA: Tier 2

DDV Basis: 100K ___ 120K ___ 150K X *1 SFTP: Yes X No ___

Veh Type: LEV1: PC ___ LDT1 ___ LDT2 ___ MDV1 ___ MDV2 ___ MDV3 ___ MDV4 ___

LEV3: PC/LDT X MDV GVWR <= 10K ___ MDV GVWR > 10K ___

Fuel Type(s): Dedicated X Flex-Fuel ___ Dual-Fuel ___ Bi-Fuel ___ Gasoline ___ **Diesel X**

CNG ___ LNG ___ LPG ___ M85 ___ Other (specify) 2-D ULSD

Exh Emiss Test Fuel(s): Indo ___ CBG ___ CNG ___ LPG ___ M85 ___ Other (specify) ULSD

Diesel: 13 CCR 2282 ___ 40 CFR 86.113-90 ___ 40 CFR 86.113-07 X

Durability Service Accum: Whole Veh Full Mi X Whole Veh Accel Mi ___ Bench ___ Other SRC

EDV Std Compliance: DF X Aged Parts ___ Other ___

Exh ECS (use abbreviations per SAE J1930): ECS #1) DFI/TC/CAC/WR-HO2S/OC/DPF+SCRC/SCRC/NOXS/EGR/EGRC

EGR Type: other AIR Type: n.a.

Displ. (L): 2.0 Engine Config. I4 Turbo Valves per Cylinder: 4

Rated HP: 1) 150 @ 3500 RPM

Engine: Front X Mid. ___ Rear ___ Drive: FWD X RWD ___ 4WD-FT ___ 4WD-PT ___

All Eng Codes in Test Group: **CA** ___ **49S** ___ **50S** X

NMOG Test Procedure: Std X Equiv ___ RAF: NMOG n.a. CH4 n.a.

Mfr's NMOG Fleet Avg (g/mi): ___ Ratio(NMOG w/o RAF): NMOG/NMHC 1.0 HCHO/NMHC by statement

OBD2 Compliance: Full ___ Partial X Partial w/1 fines ___

Test Veh.:	DDV		EDV		EDV	
	MY	ID	MY	ID	MY	ID
	2012	411 10472	2015	370 50379/15	2015	361 50070/15
			2015	324 50038/15	2015	370 40145/15
			2015	361 50063/15		

Evap Fam #)	ECS #)	Displ. (Liters)	Engine Code (also list CA/49ST/50ST)	Vehicle Make / Models	Trans. (M5, A4, etc.)
N/A	1	2.0	CRUA / 50 ST	Audi / A3	A6
				continued	

(*1) DDV results based on extrapolating existing 120k SRC durability results to 150k according regulations

Section 17	Pg. 4	California ARB Information	Eng. Code:	R.CH-No.:	Revision Date:
Part 1	Test Group: FVGAV02.0VAL		all		

E.O.# _____

Page 2 of 3

**2015 AIR RESOURCES BOARD SUPPLEMENTAL CERTIFICATION SUMMARY SHEET
PASSENGER CARS, LIGHT-DUTY TRUCKS AND MEDUM-DUTY VEHICLES**

continued:

Manufacturer: Volkswagen Durability Group: FVGADPDNNVAL Test Group: FVGAV02.0VAL

Evap Fam #)	ECS #)	Displ. (Liters)	Engine Code (also list CA/49ST/50ST)	Vehicle Make / Models	Trans. (M5, A4, etc.)
N/A	1	2.0	CVCA / 50 ST	Passat	A6
N/A	1	2.0	CVCA / 50 ST	Passat	M6
N/A	1	2.0	CVCA / 50 ST	Beetle	A6
N/A	1	2.0	CVCA / 50 ST	Beetle	M6
N/A	1	2.0	CVCA / 50 ST	Beetle convertible	A6
N/A	1	2.0	CVCA / 50 ST	Beetle convertible	M6
N/A	1	2.0	CRUA / 50 ST	Jetta	A6
N/A	1	2.0	CRUA / 50 ST	Jetta	M6
N/A	1	2.0	CRUA / 50 ST	Golf	A6
N/A	1	2.0	CRUA / 50 ST	Golf	M6

Date Issued:

Revisions: _____

(*1) DDV results based on extrapolating existing 120k SRC durability results to 150k according regulations

Section 17	Pg. 5	California ARB Information	Engine Code:	R.CH-No.:	Revision Date:
Part 1	Test Group:	FVGAV02.0VAL	all		6-19-2014

2015 MODEL-YEAR CERTIFICATION REVIEW SHEET
EXHAUST/EVAPORATIVE SYSTEM & CALIFORNIA REQUIREMENTS
PASSENGER CARS, LIGHT-DUTY TRUCKS AND MEDIUM-DUTY VEHICLES

E.O.# _____
Page 3 of 3

Manufacturer: Volkswagen AG Test Group: FVGAV02.0VAL Evaporative Family: n.a.

PROJECTED EMISSIONS

(g/mi, except g/test for evap., g/gal Refuel.) (1), (2)

Data Vehicle ID Test version	Engine Code (Displ)	Test Loc.	Trans	(Check One)		MPG City/Hwy	NMOG + NOx	CO	HCHO**	20°F CO	Hwy NMOG + NOx	City CO2	EVAPORATIVE				@150k	
				X ETW	X RLHP								3-day D+HS	R/L	2-day D+HS	ORVR		
361 50070/15 Conf. 0	CVCA	Mfr.	SA6	3875	*	39.1/60.2	0.051	0.09	<u>n.a.</u>	0.16	0.004	0.017	260	--	<u>n.a.</u>	<u>n.a.</u>	<u>n.a.</u>	@150k

The EDV (s) above comply with standards of: (@ 150K for PC,LDT, MDV):
(@ 50K for PC,LDT, MDV):

<u>0.125</u>	<u>2.10</u>	<u>n.a.</u>	<u>0.004</u>	<u>n.a.</u>	<u>0.010</u>	<u>0.125</u>	<u>n.a.</u>	<u>n.a.</u>	<u>n.a.</u>	<u>n.a.</u>	<u>n.a.</u>
			<u>10.0</u>								

The NMOG values include Reactivity Adjustment Factor(s) (RAF) of:

Not Applicable ___ NMOG 1.0 Methane (CNG or LNG only) ___

Emission values include deterioration factors (DF's) ***
with UAF deterioration, (if applicable) of (150K):

<u>0.017</u>	<u>0.07</u>	<u>n.a.</u>	<u>n.a.</u>	<u>0.07</u>	<u>0.001</u>	<u>0.017</u>	<u>n.a.</u>	<u>n.a.</u>	<u>n.a.</u>	<u>n.a.</u>	<u>n.a.</u>
--------------	-------------	-------------	-------------	-------------	--------------	--------------	-------------	-------------	-------------	-------------	-------------

LEV/ULEV/SULEV 50°F emissions (without RAF and DFs):

n.a. n.a. n.a. n.a.

LEV/ULEV/SULEV 50°F standards:

n.a. n.a. n.a. n.a.

- (2) Evaporative DF : not applic able
- (3) List configuration with highest projected sales first

Remarks : * according Road Track Adjustment Procedure, refer to common section 12

** HCHO Compliance by statement.

*** DFs include upward adjustment factors of PMTRAP regeneration

SFTP Composite according to LEV III Exhaust Standards Part 1.2.2.1.2:

Results: NMOG+NOx Composite = 0.034; CO Composite = 0.084

FEL: NMOG+NOx Composite = 0.120; CO Composite = 4.2

CO2 values: HFET – 03/25/2014: 169 g/mi // US06 – 03/25/2014: 270 g/mi // SC03 – 03/28/2014: 332 g/mi

Application

Processed by: _____ Date: _____ Reviewed by: _____ Date: _____

Date Issued: 5-13-2014

Revised: 6-19-2014 eeo



Volkswagen AG, a member of the Volkswagen Group

Application for Emissions Certification Part 2 Initial

2015 Model Year

Durability Group: FVGADPDNNVAL
Evap. Families: N/A - Diesel

Test Group: FVGAV02.0VAL

EPA Certificate Number: FVGAV02.0VAL -xxx

Durability Group Description: Four stroke, diesel cycle, diesel fueled, direct fuel injection, compression ignition, turbocharger, charge air cooler, EGR, EGR cooler heated oxygen sensor, NOx-sensor
Oxidation catalyst: code: DF635
Diesel particulate filter (DPF) code: SF630
SCR catalyst: code: DF500B

Test group Description: 2.0 Liter I4 Diesel (SCR) – LDV

Applicable Standards: 50-State: Federal: Tier 2
CA: LEV III ULEV125

Carlines Covered: Audi A3
Volkswagen Passat, Golf, Jetta,
Beetle, VW Beetle Convertible

Issue Date: 5-28-2014

Update:

For Questions, Contact:
Bill Rodgers, (248) 754-4219
Michael Giles, (248) 754-4229
Greg Allen, (248) 754-4209

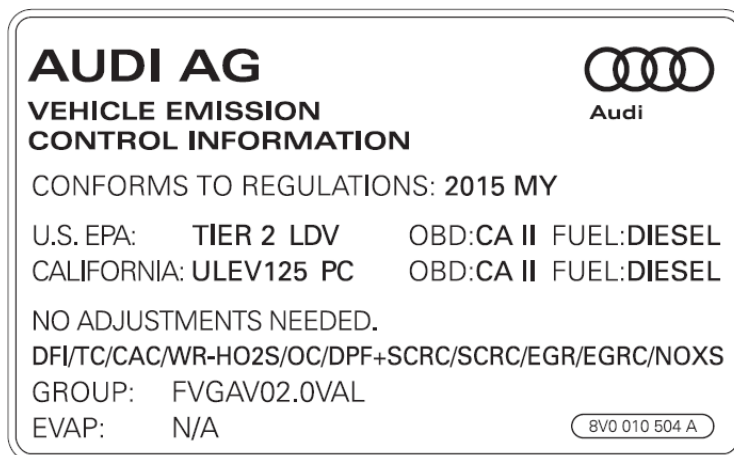
Section 21	Pg. 1	Label / Parts Information	Engine Code:	R.CH-No.:	Revision Date:
Part 2	Test Group: FVGAV02.0VAL				

21.00 Label Information

21.01 Tune-Up Label (MY 2015)

Audi

A3



part no. see section 21 page 2

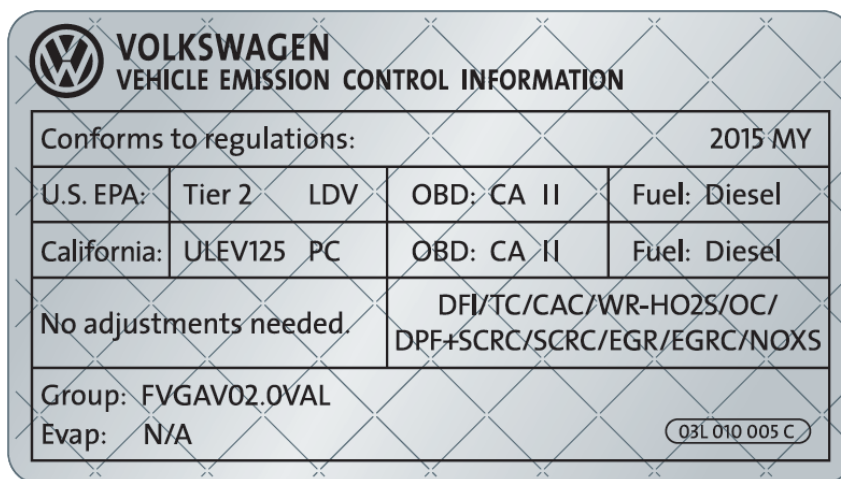
Section 21	Pg. 2	Label / Parts Information	Engine Code:	R.CH-No.:	Revision Date:
Part 2	Test Group: FVGAV02.0VAL				

21.00 Label Information (contd.)

21.01 Tune-Up Label (MY 2015)

Volkswagen

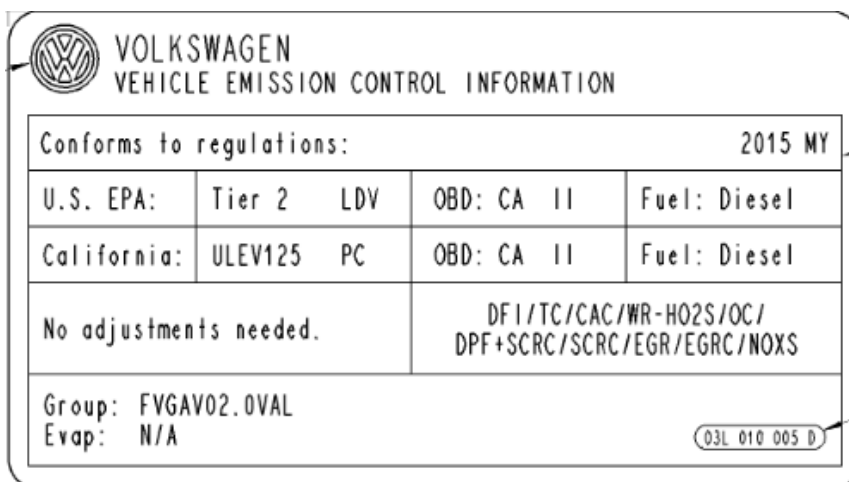
Passat



Part number: 03L.010.005.C

Volkswagen

Golf, Jetta, Beetle, Beetle convertible



Part number: 03L.010.005.D

Section 21	Pg. 3	Other Information	Engine Code:	R.CH-No.:	Revision Date:
Part 2	Test Group: FVGAV02.0VAL				

21.02 Production Engine Parameters

Parts List

Part	Part Number
emission control label (my2015) Audi A3	8V0 010 504 A
emission control label (my2015) VW Passat	03L 010 005 C
emission control label (my2015) VW Golf, Jetta, Beetle, Beetle convertible	03L 010 005 D

Section 21	Pg. 4	Label / Parts Information	Engine Code:	R.CH-No.:	Revision Date:
Part 2	Test Group: FVGAV02.0VAL		All		

21.00 Label Information (contd.)

21.02 Vacuum-Hose Routing Label

Vacuum-hose routing label label information:

not applicable

21.03 I/M Exemption Label

not applicable

4 wheel drive only